



Overall	
Length	48' 1"
Height	11' 11"
Width	11' 2"
Weight	App. 78,000 pounds (w/CAT 3412)
Box	
Length	11' 6"
Width	60"
Output conveyor	
Length	30'
Width	60"
Rotor	
Length	60"
Diameter	40"
Weight	7,100 pounds
Hammers	24
Hammer Weight	66 pounds, each
Tips, Reversible	7 pounds, each

Throughput	Up to 200 tons/hour
Power	
Diesel	CAT C18 700 HP; standard CAT3412E 1030 HP optional Effective 2006 CAT C27 1100HP will replace 3412E
Electric	Two (2) 300-500 HP motors
Electrical	Radio remote control for all functions, with full, independent mechanical backup



At only 78,000 pounds, the 6800 is specifically engineered to be transported on a standard lowboy.

- Portable, stationary, or track mounted
- Highest throughput – up to 200 tons/hour
- Clamshell opening for ease of maintenance
- Twin Disc Hydraulic Clutch
- Full radio remote control
- Built in pre-screener for by-pass of abrasive fines
- Shear pin protection
- Replace-A-Face™ hammer system
- Choice of two CAT engines up to 1050 HP
- CBI IntelliGrind™ control system



As productive as a 30" chipper with a fraction of the prep and maintenance.

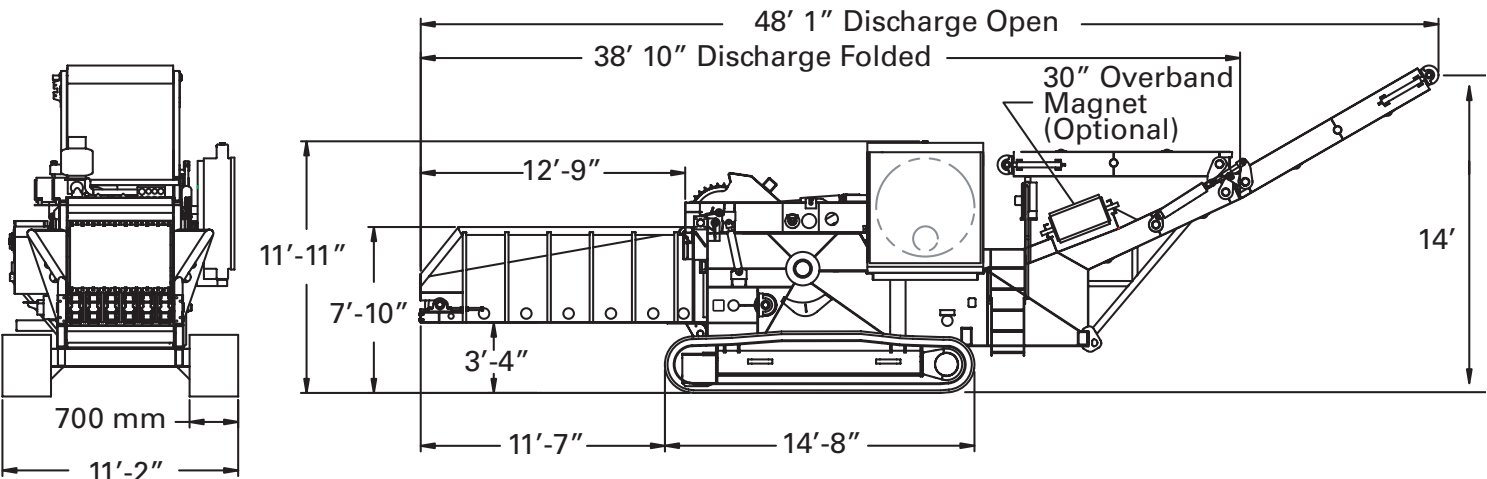
The Magnum Force Series 6800 Horizontal Hog is built specifically for land clearing companies and yard waste processors who demand high volume throughput and maximum reliability – and is the first grinder ever made that can grind whole trees as fast as a 30" chipper can chip. The 6800 features a unique clamshell opening for ease of maintenance; high torque, hydrostatic feed system; Twin Disc hydraulic clutch; and a choice of two CAT power plants. The 4" thick, high strength rotor core is shear pin protected, and the entire system is controlled by CBI's new IntelliGrind logic that incorporates feed speed that varies automatically with engine load, and an optional modem communications system that provides for real-time system diagnostics, analysis, and operating program adjustments allowing the operator to optimize performance while avoiding costly downtime. Available in portable, stationary, or track-mounted versions, the 6800 is the perfect solution for your wood processing needs, no matter the location or application.

The hog box has a unique clamshell design providing full access for maintenance and a direct line to lift and remove grates. The push of a single lever retracts the two main lock pins, and a second lever activates two hydraulic cylinders that lift the entire upper section to a very service-friendly, just over center-vertical position. A side door allows for optional access for removal of the bottom screen. The 6800's three-grate system, allows for product size that can be easily customized depending on feedstock and end product requirements. Several sizes and patterns are available ranging from 1"x2" regrid grates, up to 6"x9" for high production on primary grind. Anvil and grates are supported by heavy duty shear pins for rotor protection.

The hog chamber is a heavy-duty reinforced housing with 100% continuous welds, providing maximum corrosion resistance, and the ultimate in rigidity and strength. Bolt-in, Hardox 400 wear liners simplify maintenance. Other features include a 39" diameter upper feed roller with a built in high-torque Poclain hydraulic motor; hydraulic up and down pressure; extra heavy-duty grate frame with three replaceable grate liners. The 40"Dx60"L upswing rotor features a forged 4" thick drum wall with 24 machine pockets, providing an effective shaft diameter of 26"; 24 bolt-on hammers with five 1-1/4" bolts per hammer; and 24 bolt-on tips using one 1-1/18" bolt per tip. The rotor is locked to the shaft by four B-Loc locking assemblies. CBI's new Replace-A-Face™ hammer system allows the operator to swap out the face independent of the rest of the hammer for quick, easy, and inexpensive repairs.

Heavy-duty formed sections with tubular cross members properly reinforced for the highest torsion loads and strength, designed for bolt-on tracks with adjustable ground clearance, overband magnet (optional), and standard six, or optional twelve, cylinder CAT engine. The wide flange and tubular lattice structure provide high rigidity and strength, while greatly reducing weight.

Tracks supplied by Intertractor come equipped with CAT componentry. Bonfiglioli high torque drives deliver over 78,000 pounds of draw bar pull, and, combined with triple-grousered tracks up to 700mm wide, allow for almost unlimited off road travel.



Continental Biomass Industries, Inc.
World's Best Stationary and Portable Material Recovery Systems
 22 Whittier Street, Newton, NH 03858
 Phone: 603-382-0556 Fax: 603-382-0557
 Web: cbi-inc.com Email: info@cbi-inc.com

Distributed by:

Outstanding throughput... Ultimate versatility... More Value... by Design

Feed and Discharge System

The feed system features a 12'9" L" x 60" W Feed Conveyor with high troughing sides facilitating continuous feed; impact plate in bottom; 17" head pulley; 17" tail pulley; 6 strands of heavy-duty drag chain; extreme high-torque Poclain hydraulic motor. The open-ended design and large capacity simplifies feeding full-length materials and accommodates large material surges. The upper roller, with internal drive, has a crush force that is adjustable by radio control. The entire feed system is load regulated. The discharge is 33' long x 60" with wide heavy-duty head & tail pulleys; 220-cleated belt. It rides in a steel bed at hog location then on idlers, and folds for transport.

Power Unit

All CBI 6800's are powered by either a CAT C-18 Diesel or 3412 Electronic Diesel engine. The C-18 delivers 700HP at 2100 RPM, The 3412E is rated at 1050HP at 2100 RPM. Both feature electric start, turbo-charger, and after-cooler. The engines also come equipped with:

- Extra large radiator using a 48" to 54" fan (Optional: Flexxaire Auto-Reversible Fan)
- Twin Disc model HP600 extra heavy-duty PTO hydraulic clutch with outboard support bearing, electronic controlled engagement
- Donaldson Air Filtering System with Engine Pre-Cleaners
- 8" Critical Silencer
- Electric battery 24 volt DC system
- Emergency shut down and all weather control enclosures

Note: Effective in 2006, the CAT 3412E will be replaced by the C27 engine rated at 1100HP at 2100 RPM.

Hydraulic System

Two, 12 gpm 3000 psi pumps for discharge conveyor and feed roll up and down; two, 5,000 psi 34-gpm proportional hydrostatic Rexroth pumps for track drive and feed system; hydraulic driven oil cooler; neatly plumbed using stainless tubing and hoses; 75 gallon reservoir with filters; pumps driven directly from pads on Twin Disc HP600 clutch.

Electrical

CBI's IntelliGrind™ operating system features automatic variable feed speed and top feed roll position tied to engine load. An optional Modem Communication System provides real-time system diagnostics and the Operator Alert System monitors engine oil, hydraulic filters, temperature, pressure, and fluid levels. A radio remote control, with full mechanical backup, runs all functions of the machine. Two E-stops are placed around each unit.

Paint

All appropriate surfaces are sand blasted to S.S.P.C. SP 6-10 commercial-to-white finish. One coat of epoxy primer to product spec and one coat of CBI yellow high gloss Dupont polyurethane enamel paint complete the process. Equipment is assembled using plated hardware.

6800

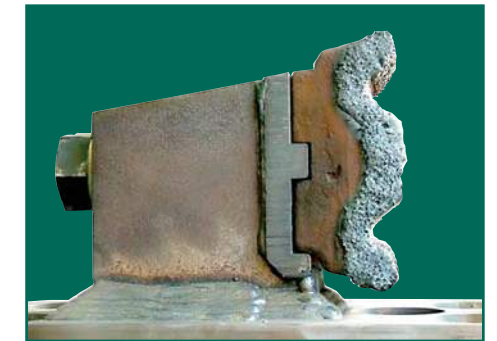
60" wide discharge conveyor for high volume throughput and 14' discharge height for loading trailers

Unique clamshell design provides full access for maintenance and a direct line to lift and remove grates

Direct coupled, hydrostatically powered motors provide ultra-high torque for top feed roll and feed chain. Easily feeds trees with minimal prep.

Upper feed roller crush force is adjustable by remote control.

Extra-thick, shear pin protected anvil and screens



Quick, easy, inexpensive repairs with CBI's Replace-A-Face™ hammer system.

Large capacity feed hopper easily handles full-length trees or large material surges with no problem



Mounting brackets and plumbing for overband magnet is standard

Twin Disc HP600 hydraulic clutch

Bolt-on tracks allow for adjustable ground clearance. Bonfiglioli high torque drives deliver over 78,000 pounds of draw bar pull, and, combined with triple-grousered tracks up to 700mm wide, provide almost unlimited off road travel.

Why should you own a 6800 Track Grinder? Just check out these features:

- Split hog box for easy service access
- Replace-A-Face™ hammers
- High torque feed system
- High torque tracks
- Shear pin protected anvil and screens
- Hydraulic clutch
- Hydrostatic drives
- 14' discharge height for truck loading
- Power plant up to 1100HP
- Industry's strongest rotor

All this in a package weighing in around 78,000 pounds so it can be easily moved from job to job. That's why.

In the Field



High production of fine, uniform mulch.



The CBI Challenge....Our 6800 can fill a 100 cy trailer in 10 minutes...Can you and your equipment keep pace?



Stumps, butt logs and whole trees with minimal prep.